

CROSS FLOW FAN SPECIFICATION

BUYER: STANDARD

DATE: 2018.05.18

DESCRIPTION: CROSS FLOW FAN

FILE NO: JF-93015

MODEL: JE3-05029A24-3B

REVISE DATE:

1.SPECIFICATION:

- 1-1 RATED VOLTAGE: DC 24V**
- 1-2 MOTOR TYPE: DC BRUSHLESS**
- 1-3 MOTOR MODEL: 3D42AB05-2(3 PHASE)**
- 1-4 RATED TIME: CONTINUOUS**

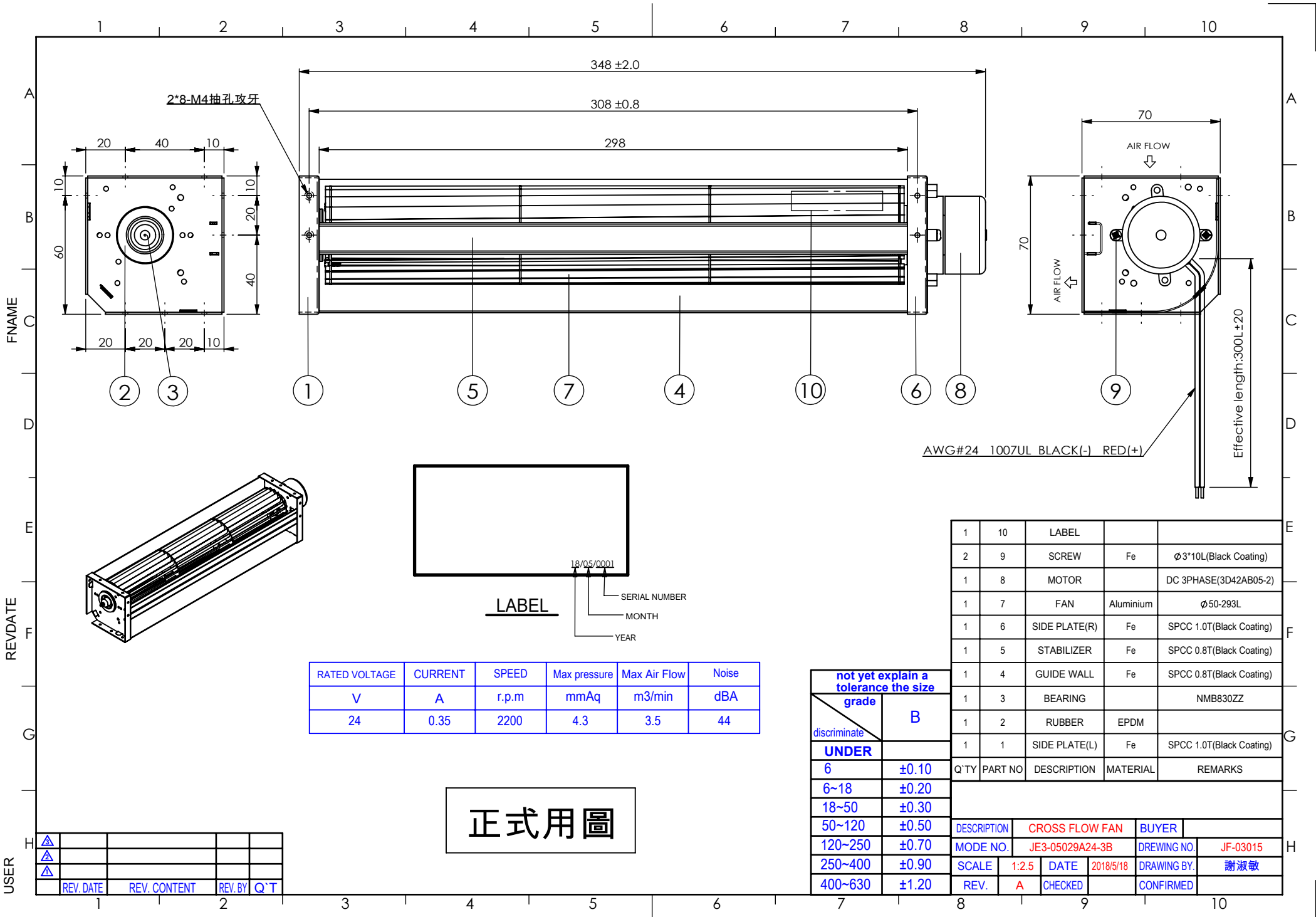
2.RATED DATA(DURING NORMAL TEMPERATURE, HUMIDITY)

- 2-1 RATED AMPERE: 0.35 A±18%**
- 2-2 RATED SPEED: 2200 R.P.M±10%**
- 2-3 START VOLTAGE: 16V (UNDER)**
- 2-4 MAX AIR FLOW: 3.5 m³/min**
- 2-5 MAX. PRESSURE: 4.3 mmAq**
- 2-6 TEMPERATURE RAISING: TEMPERATURE OF MOTOR COIL RAISING UNDER 58 DEGREE.**
- 2-7 NOISE: UNDER 47 dBA, BUT DEPENDS ON 1 METER IN FRONT OF AIR OUTLET AND ABOVE 45° POSITION**
- 2-8 INSULATION RESISTANCE: MORE THAN 50MΩDC500V**
- 2-9 DIELECTRIC WITHSTAND VOLTAGE: AC 600V ONE MIN NO TROUBLE**
- 2-10 INSULATION CLASS: A**
- 2-11 LIFE: BALL BEARING 30000 HOURS**
- 2-12 WARRANTY: ONE YEAR OR CONTINUOUSLY 10000 HOURS**
- 2-13 IMPACT RESISTANCE: DROP DOWN ONE TIME FROM 0.3M HEIGHT NO TROUBLE DURING WELL PACKAGE CONDITION.**
- 2-14 SAFETY DEVICE (PROTECTION): WHEN ON LOCK STATUS, THE CURRENT WILL BE STOPPED, IT WILL AUTO RESTART AFTER 5 SECONDS.**

3.OTHERS:

- 3-1 FAN MATERIAL: BY ALUMINUM ALLOY**
- 3-2 OUTPUT DIRECTION: HORIZONTAL OUTPUT SHAFT.**
- 3-3 WORKING CONDITION: 0°C~45°C 10~90%RH**
- 3-4 LEAD WIRES: AWG#24 UL1007 COLOR:RED(+)**
- 3-5 ROTARY DIRECTION: C.CW (FACE TO OUTPUT SHAFT)**
- 3-6 BEARING: 3* BALL BEARING**

APPROVAL BY	DRAWN BY	
陳學儀	謝淑敏	



2*8-M4抽孔攻牙

AWG#24 1007UL BLACK(-) RED(+)

18/05/0001
 SERIAL NUMBER
 MONTH
 YEAR

RATED VOLTAGE	CURRENT	SPEED	Max pressure	Max Air Flow	Noise
V	A	r.p.m	mmAq	m3/min	dBA
24	0.35	2200	4.3	3.5	44

not yet explain a tolerance the size grade	
discriminate	B
UNDER	
6	±0.10
6~18	±0.20
18~50	±0.30
50~120	±0.50
120~250	±0.70
250~400	±0.90
400~630	±1.20

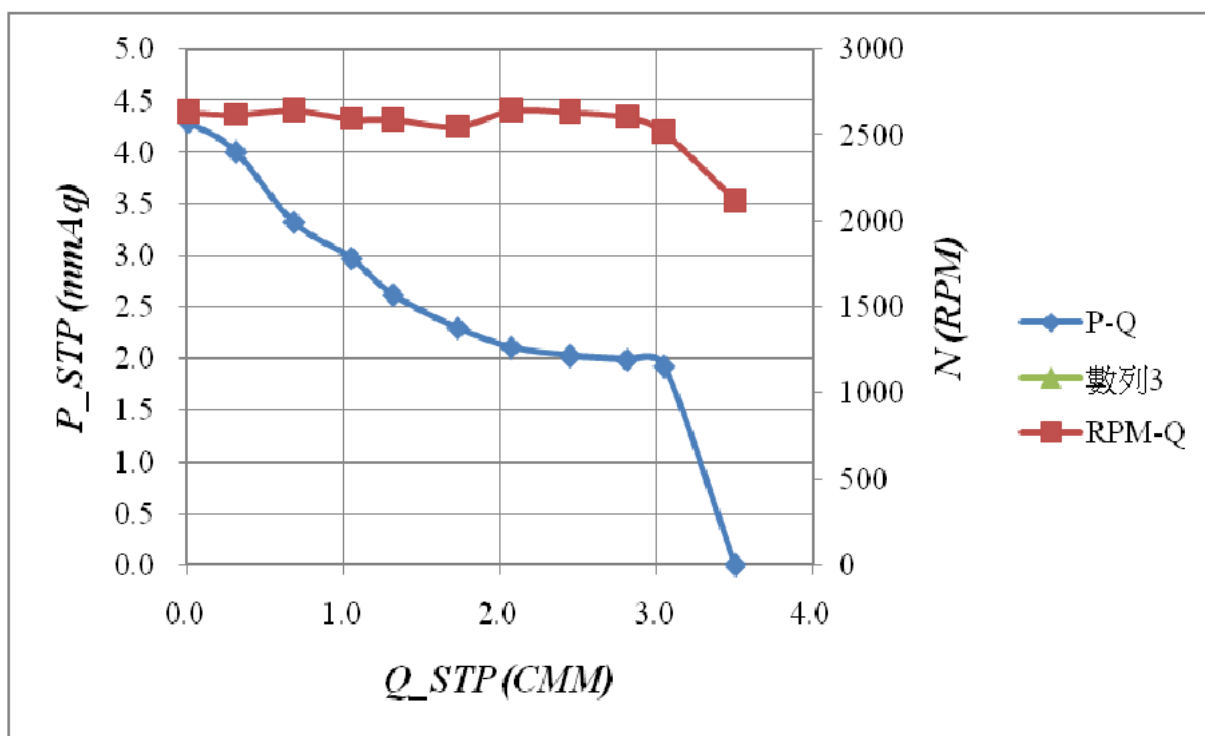
Q'TY	PART NO	DESCRIPTION	MATERIAL	REMARKS
1	10	LABEL		
2	9	SCREW	Fe	φ3*10L(Black Coating)
1	8	MOTOR		DC 3PHASE(3D42AB05-2)
1	7	FAN	Aluminium	φ50-293L
1	6	SIDE PLATE(R)	Fe	SPCC 1.0T(Black Coating)
1	5	STABILIZER	Fe	SPCC 0.8T(Black Coating)
1	4	GUIDE WALL	Fe	SPCC 0.8T(Black Coating)
1	3	BEARING		NMB830ZZ
1	2	RUBBER	EPDM	
1	1	SIDE PLATE(L)	Fe	SPCC 1.0T(Black Coating)

DESCRIPTION	CROSS FLOW FAN	BUYER	
MODE NO.	JE3-05029A24-3B	DRAWING NO.	JF-03015
SCALE	1:2.5	DATE	2018/5/18
REV.	A	CHECKED	
		DRAWING BY.	謝淑敏
		CONFIRMED	

正式用圖

USER	REV. DATE	REV. CONTENT	REV. BY	Q'T
△				
△				
△				

P/Q 曲線



dB 曲線

